

An updated and upgraded inventory of mineral occurrences of the Democratic Republic of Congo with vectorized geological map layer for GIS browsing and query.

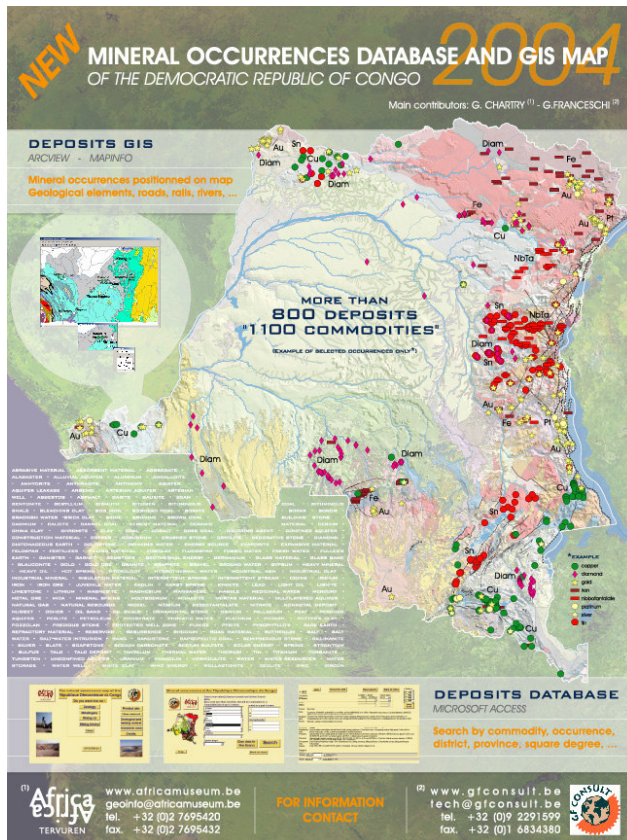
General information

An updated and upgraded inventory of the mineral occurrences of the Democratic Republic of Congo has been compiled by the Royal Museum for Central Africa (RMCA) and GF Consult bvba. of Belgium.

As a start some 800 mineral records have been extracted from the RMCA's archives and GF Consult's data base, analysed, prioritised and selected to be displayed on a simplified geological background.

Data presentation

The data files are available on a CD which also contains a vectorized geological map layer of the D.R. Congo, based on the geological map at 1/2.000.000 scale published by the RMCA in 1974, in one of a series of proprietary geographic information system formats (MAPINFO, ARCVIEW). Using MS Access® and an appropriate GIS as query engine, the mineral occurrences can be searched and/or browsed by geographic location, name, coordinates, commodity, geological setting etc... while results can be presented in table- or map-format.



System requirements

For the Database part:

- Intel-based PC
- Pentium processor
- Windows 98, Windows NT 4.0 or higher
- Access 97 or higher

For the GIS part :

- Intel-based PC
- Pentium processor
- Windows 2000 or higher
- A MAPINFO version 7.5 or higher or ArcView version 8.0 or higher GIS software licence (not on the CD).



Some useful information is provided as PDF formats for use in Adobe Acrobat Reader program.

Content of the CD-ROM

The following items are available :

Mineral occurrences map

The map shows over 800 mineral occurrences, representing over 1,100 mineral commodities, with hotlinks to to-the-point descriptions in MS Access® format. Each mineral occurrence is represented by an identification number referring to a data record. The data record display a number of valuable information such as :

- the name of the occurrence, the considered commodity (or commodities),
- the location (coordinates, square degree, region),
- the history of the discovery and/or development,
- the general geological setting,
- the mineral setting (mineralization style, grades, resources and/or size),
- the development status (stage of advancement and/or mining – production), and remarks and key references. The latter aim at allowing the reader to access additional and/or complementary information on the subject.

Microsoft Access

Menu Print Ongedaan maken onmogelijk Zoeken... Oplopend sorteren Aflopend sorteren Database comprimeren en herstellen...

Help Export to GIS New search Back to intro

ID: 348

Occurrence: Kitenge

Longitude: 27°54'E Latitude: 01°43'N Square degree: N1/27

District: Ngayu

Province: Province orientale

History: The deposit was property of the Société Minière de l'Aruwimi Ituri. It was exploited mainly till 1954-1955.

Geological setting: Basement (Upper-Congo granitoid complex), covered by Lower and Upper Kibalian (= volcano-sedimentary) formations with intercalations of quartzites, itabites (constituting the 'Nguya Greenstone Belt'). The sedimentary Lianian supergroup occurs to the S.

Remarks: Many deposits or indications of gold in the Kibalian of the region: Yambenda (211), Babeyu (212), Yindi (213), Mboro (214), Kekinda (341), Marekessa (342), Mambati (343), Natge (344), Imva (345), Mokepa (346), Adumbi (347), ...

Commodity: gold Occurrence range: 1

Mineralisation style: Gold occurring in alluvials, eluvials and 57 quartz veins (schlieren). The Py- and Aspy-bearing veins are discontinuous, parallel or "en-relais", with thickness 1 cm to 1 m. Stockwork cuts across the country rocks (green subparallel schists).

Production: Production up to 1955: 2,249 kg Au from vein deposits and 59 kg Au from alluvial deposits.

Resources: Only 7 out of the 57 veins were really productive. No further data available to the authors.

Development status: Mined deposit (veins + alluvials), status residual resources unknown.

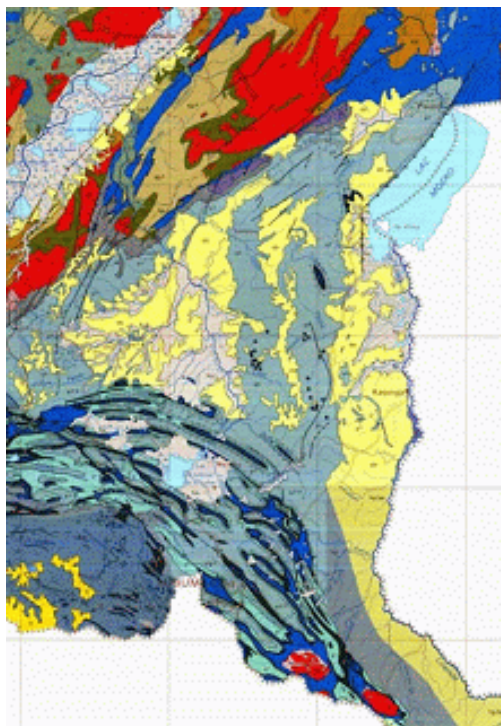
Remarks:

Geological setting: The quartz veins of Kitenge and Adumbi are part of a NW-SE structure (parallel to the wall rocks) extending from Maipunji in the east to Adumbi in the west. The mining zone is associated with a stair-shaped vein system, cut by abundant transverse faults.

Record: 1 van 1

Geological map (scale 1:2,000 000)

This is the digital version version of the 1:2.000.000 scale "Carte Géologique du Zaïre by Lepersonne, 1974"; and in particular the legend, geological limits and faults represented on this map.



Description of the geological setting of the country

A comprehensive description of the geological setting of the country reflecting the results of recent geological investigations and incorporation of new conceptual models. Though the description is still in a draft stage (missing figures, maps and diagrams), it sheds some new lights over the geological context and related mineral potential of the country.

Brief description of the metallogenic setting and history of the geological and mineral development of the country.

An introduction to the metallogenic setting of the country based on new conceptual models, and a brief description of key historical facts in the development of the geological and mineral knowledge on the country.



Bibliography

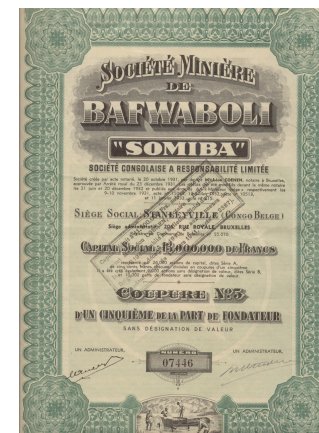
Geo-referenced bibliography of more than 700 relevant (only) titles of published papers and (unpublished) mineral exploration company reports.

Geo-data catalogue

A catalogue of existing geological and topographical maps as well as of airphotographs on the country.

Company lists

Listing and description of the main companies involved in mining and exploration in Congo in pre- and early-independence times. This unique list will prove most useful when trying to retrieve former (historical) exploration and/or mining data, as technical files are frequently classified according to the former operator.



Cost

Data package : 1,073.50EUR + postage and handling.

Shipment charges: depend on destination and selected shipment service (mail, courier...).

Please contact us for a complete quotation.

Ordering Information

Please mail, phone or fax your order to :

Royal Museum for Central Africa
 Leuvensesteenweg, 13 - 3080 Tervuren - Belgium
 Tel. : +32 2 769.54. 20 Fax. : +32 2 769.54 32
 E-mail geoinfo@africamuseum.be